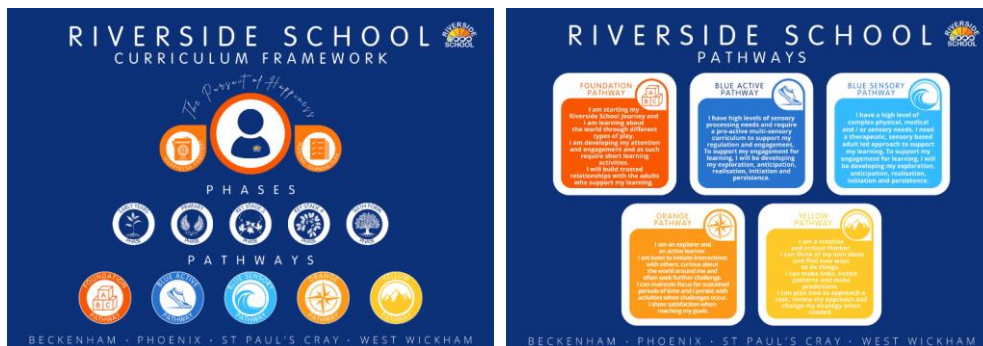


18<sup>th</sup> October 2024

Dear Riverside families,

I hope that you are all well.

It has been an action-packed half term and we are well and truly back in the swing of things. Whilst September was spent settling children into their new classes, October has seen a number of events on all sites, from birthday parties in the Riverside Lounge to activities to mark Black History Month and World Mental Health Day. Our new curriculum framework has been rolled out across all sites and phases and for more information about our different pathways, please see: <https://www.riversideschool.org.uk/page/?title=Curriculum+Framework&pid=190>.



We continue to develop and expand our Expressive Arts offer across all Pathways and are currently working in partnership with The Royal Ballet and Opera House, amongst a number of Arts organisations, to widen our pupils' worlds. Another project we are particularly excited about is Rhythmerside. The Rhythmerside Approach is a movement and music-based programme designed for children and young people (movement partners) with profound and multiple learning difficulties and includes various songs to facilitate movement, proprioceptive awareness and kinaesthetic learning through rhythm, touch and sensory stimulation. We have great pleasure in sharing the link with you here: <https://youtu.be/AJXNEqBFQp0> and please feel free to re-share with anyone whom you feel would enjoy it.



We are already looking forward to the second half of the Autumn Term and everything that this time of year brings, from our Primary Christmas Immersives to the Christmas Fair on 16<sup>th</sup> November. Not only are we preparing for in-school events, but we have been asked to present

our work to wider audiences and we remain committed to reaching out beyond our school gates to support children and families who may, at times, need a little bit extra.

To finish, I wanted to draw your attention to the Local Authority's SEND Local Offer and information pages and you can find out more at <https://www.bromley.gov.uk/SENDLocalOffer>. There are a range of events in Bromley in November and these can be found at <https://www.bromley.gov.uk/news/article/117/whats-happening-in-special-educational-needs-and-disabilities-send>



That's it for now, other than to thank you for your support and to wish you all a happy and healthy half term.

With very best wishes,

Steve Solomons  
Headteacher