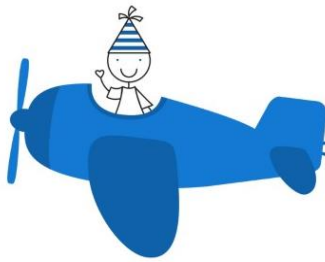


New for 2022...



The Bromley Children Project

Autism Family Support Service

Offering an information and signposting service to all families with children and young people (0-25) with Social Communication Difficulties (including Autism).

This new service will offer:

- A dedicated Autism Family Support Co-Ordinator.
- A telephone and email service to offer guidance and information for families.
- A range of information sheets which seek to improve and develop parental knowledge and understanding of Autistic Spectrum Condition.
- A monthly newsletter highlighting items of interest to families with children and young people with Social Communication Difficulties (including Autism).
- Regular coffee morning/afternoons to provide a network of support for families.

Please note this service is not case holding and is a signposting service.

This service will work in close partnership with the new Bromley Mencap Specialist Family Support Service which will support those families who would benefit from extra input through short term intensive support and guidance.

The vision of this partnership is to ensure that all families with children and young people (0-25) with Social Communication Difficulties (including Autism) feel supported.

Please note: Families should always contact the Autism Family Support Service in the first instance as Bromley Mencap will not be accepting new self referrals from families as part of their specialist offer

Our Autism Service Family Support Co-ordinator is:

Cat Hardiman

Email: autisticspectrumcondition@bromley.gov.uk

Telephone: 0208 461 7697

Address: Blenheim Children and Family Centre
Blenheim Road
Orpington, Kent
BR6 9BH

(Working days are Monday to Thursday 9.30-2.00 p.m. We aim to respond to you within 48 hours)



www.bromleyiass.org.uk

020 8461 7630

iass@bromley.gov.uk

