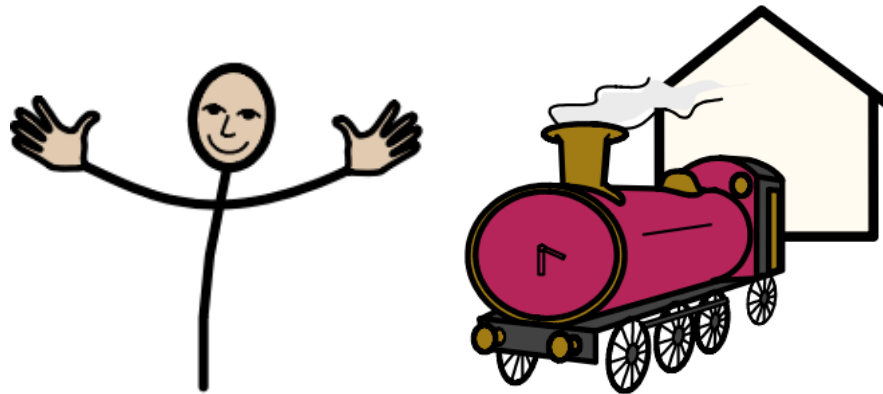
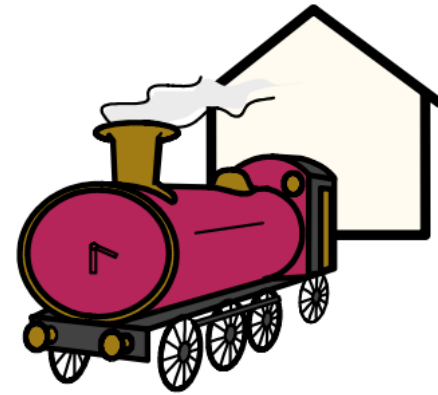


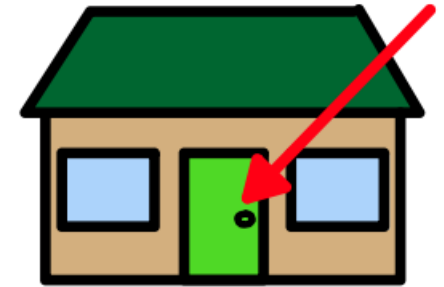
Welcome to London Transport Museum



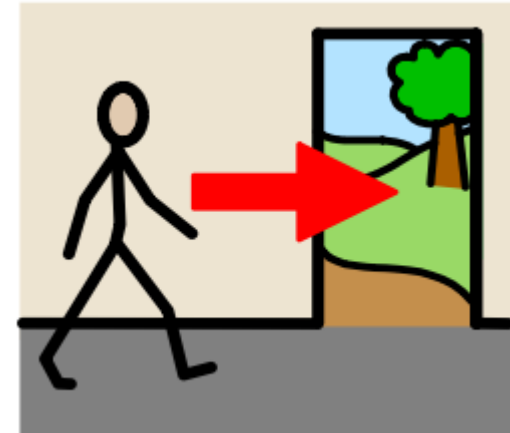
My name is Stephanie. I work
at London Transport Museum



This is the museum entrance



Come and look inside



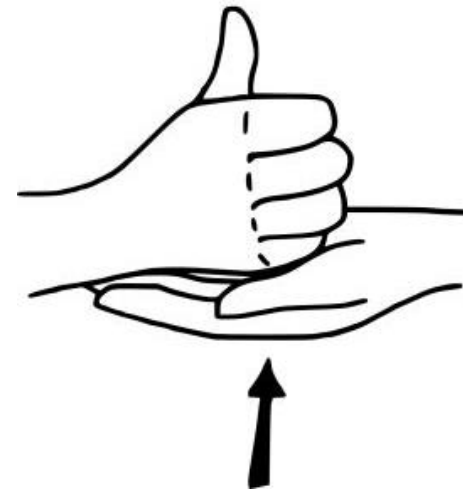
This is the ticket desk



You can leave your coat and bag in our cloak room

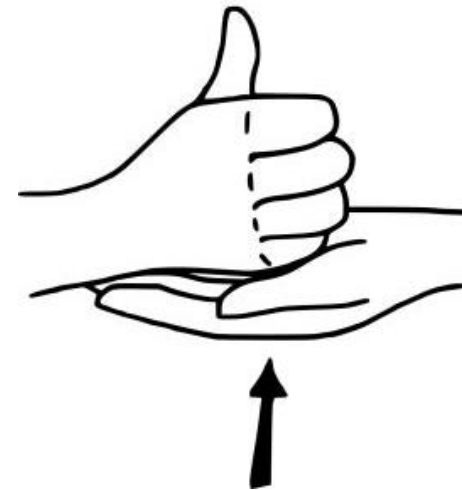


People in uniforms can help you



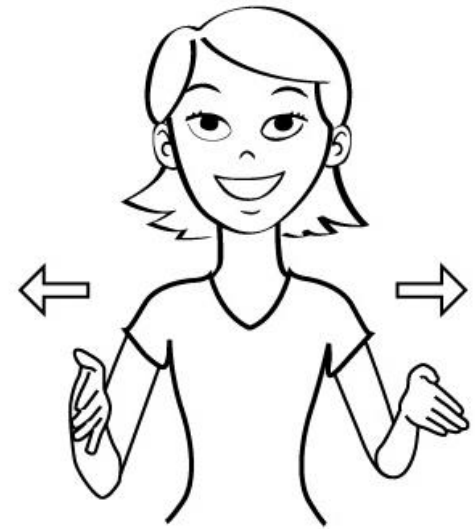
london
transport
museum

Security can help you too

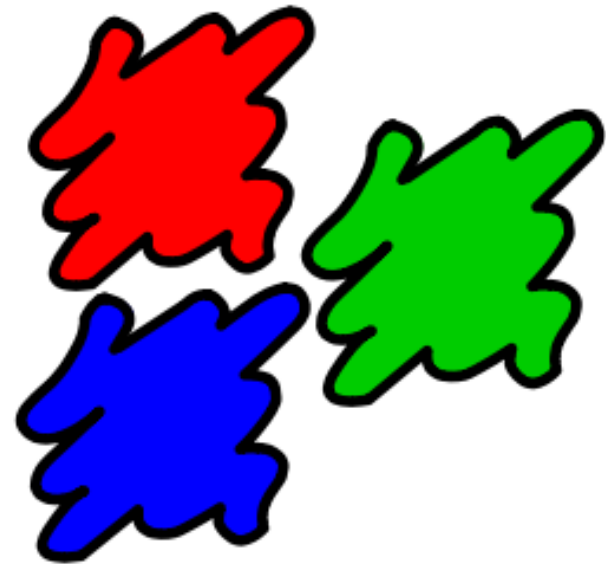


london
transport
museum

London Transport Museum is big



London Transport Museum is colourful

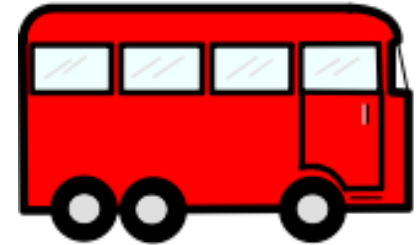


london
transport
museum

London Transport Museum has red buses



London Transport Museum has old buses



london
transport
museum

London Transport Museum has old trains



Some vehicles have pretend people in them



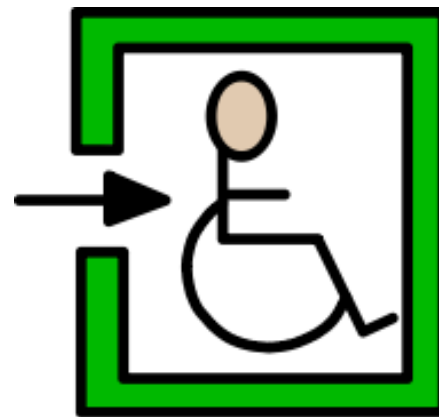
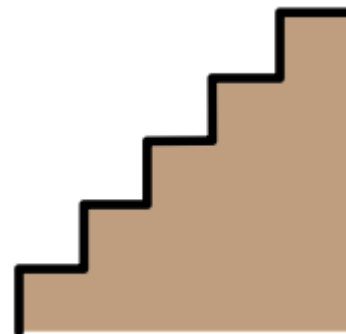
We call them mannequins



Some vehicles have steps

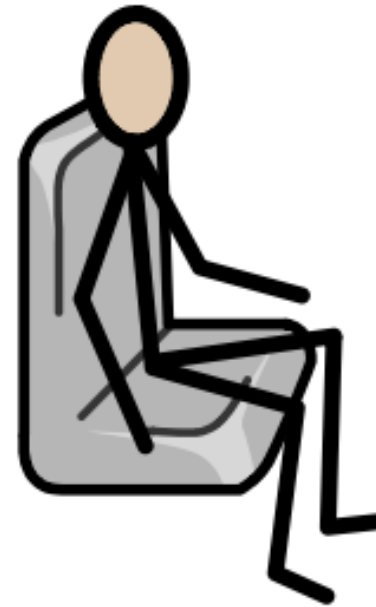


Some vehicles have no steps



london
transport
museum

You can sit inside some vehicles

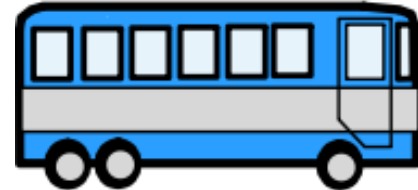
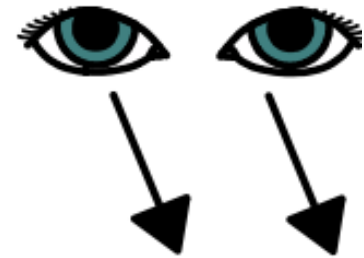


london
transport
museum

You can listen to things

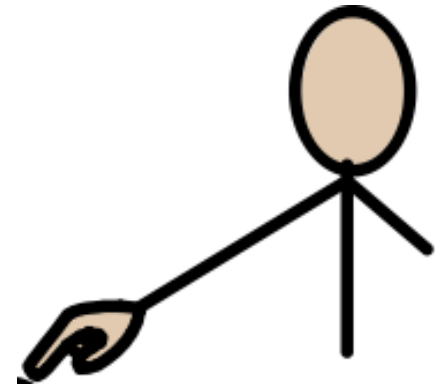


You can look at things

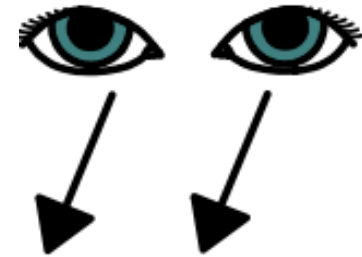


london
transport
museum

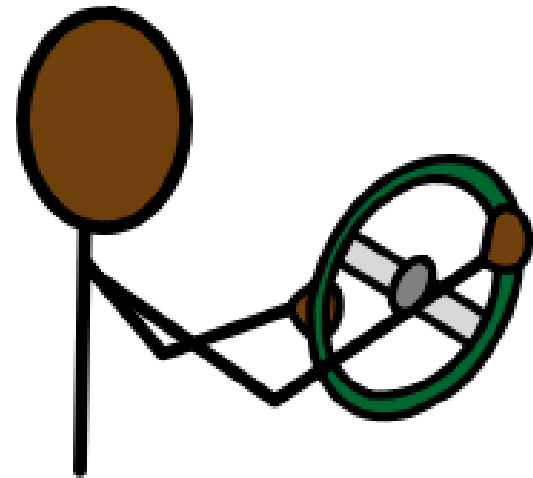
Some things you can touch



Some things are only for looking



You can drive



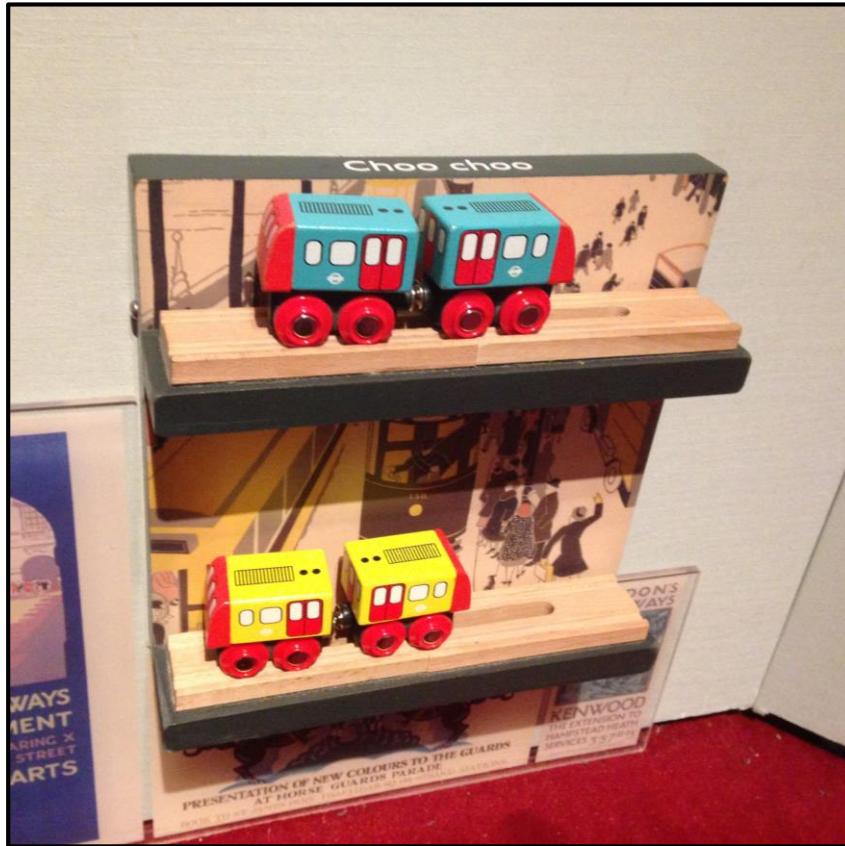
london
transport
museum

You can play



london
transport
museum

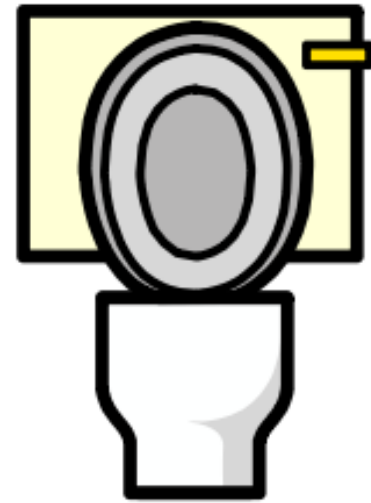
There are things to play with in the Poster Girls exhibition



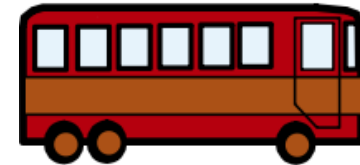
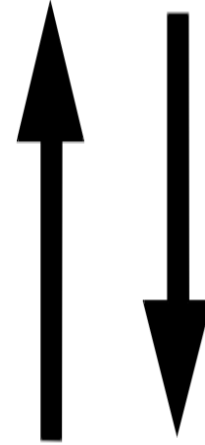
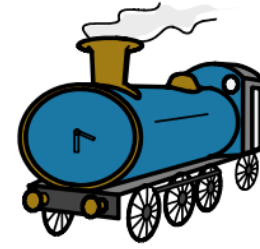
There are activities you can take from the Family Station



There are toilets



There are lifts



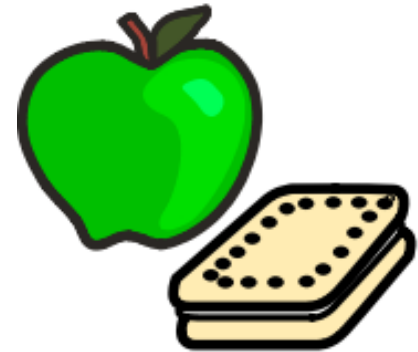
london
transport
museum

You can change or take medicine here



london
transport
museum

You can eat and drink in the picnic area



Thank you
and see you soon!

